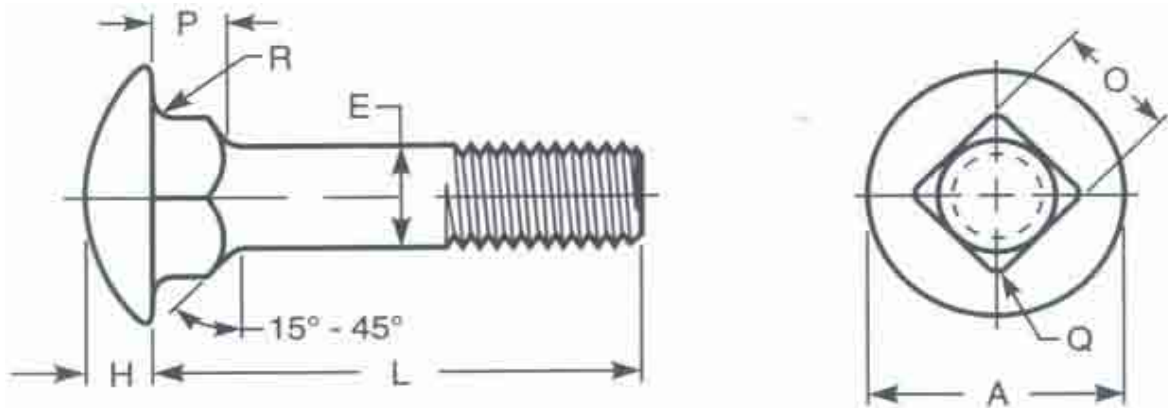




Fasteners

All of our Carriage Bolts, Lag Screws, Hex Head Bolts, Nuts, Flat and Lock Washers are available in Stainless Steel. Specs will vary from the galvanized spec listed.

Carriage Bolts Galvanized

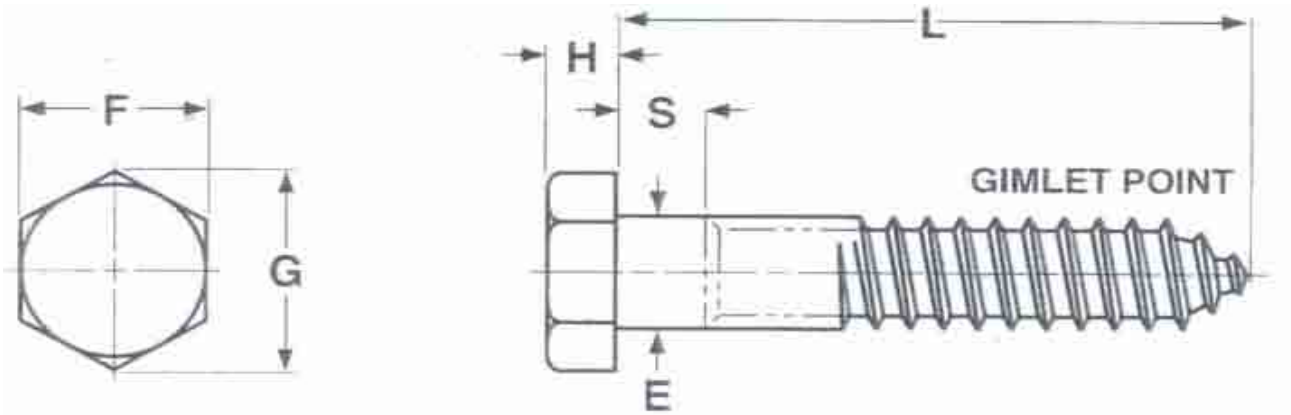


Nominal Size or Basic Bolt Diameter	E		A		H		O		P		Q	R	
	Body Diameter		Head Diameter		Head Height		Square Width		Square Depth		Corner Radius on Square	Fillet Radius	
	Max	Min	Max	Min	Max	Min	Max	Min	Max	Min	Max	Max	
No. 10	0.1900	0.199	0.182	0.469	0.438	0.114	0.094	0.199	0.185	0.125	0.094	0.031	0.031
1/4	0.2500	0.280	0.237	0.594	0.563	0.145	0.125	0.260	0.245	0.158	0.125	0.031	0.031
5/16	0.3125	0.324	0.298	0.719	0.688	0.176	0.156	0.324	0.307	0.187	0.156	0.031	0.031
3/8	0.3750	0.388	0.360	0.844	0.782	0.208	0.188	0.388	0.368	0.219	0.188	0.047	0.031
7/16	0.4375	0.452	0.421	0.969	0.907	0.239	0.219	0.452	0.431	0.250	0.219	0.047	0.031
1/2	0.5000	0.515	0.483	1.094	1.032	0.270	0.250	0.515	0.492	0.281	0.250	0.047	0.031
5/8	0.6250	0.642	0.605	1.344	1.219	0.344	0.313	0.642	0.616	0.344	0.313	0.078	0.062
3/4	0.7500	0.768	0.729	1.594	1.469	0.406	0.375	0.768	0.741	0.406	0.375	0.078	0.062
7/8	0.8750	0.895	0.852	1.844	1.719	0.459	0.438	0.895	0.865	0.469	0.438	0.094	0.062
1	1.0000	1.022	0.976	2.094	1.969	0.531	0.500	1.022	0.990	0.531	0.500	0.094	0.062



Fasteners

Lag Screws Galvanized

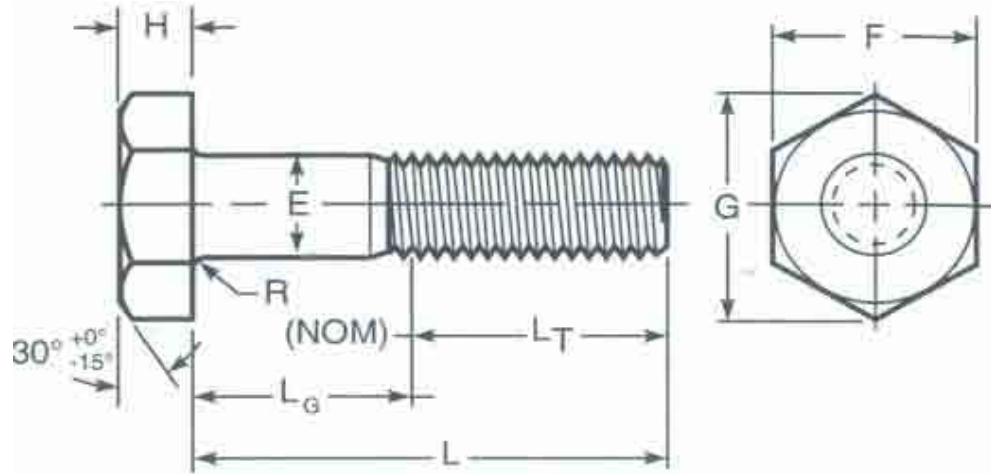


Diameter	E		F		G		H		S
	Body Diameter		Width Across		Width Across Corners		Height		Shoulder Length
	Max.	Min.	Max.	Min.	Max.	Min.	Max.	Min.	Minimum
10	.199	.178	.281	.271	.323	.309	.140	.110	.094
1/4"	.260	.237	.438	.425	.505	.484	.188	.150	.094
5/16"	.324	.298	.500	.484	.577	.552	.235	.195	.125
3/8"	.388	.360	.562	.544	.650	.620	.268	.226	.125
7/16"	.452	.421	.625	.603	.722	.687	.316	.272	.156
1/2"	.515	.482	.750	.725	.866	.862	.364	.302	.156
5/8"	.642	.605	.938	.906	1.083	1.033	.444	.378	.312
3/4"	.768	.729	1.125	1.088	1.299	1.240	.524	.455	.375
7/8"	.895	.852	1.312	1.269	1.516	1.447	.604	.531	.375
1"	1.022	.976	1.500	1.450	1.732	1.653	.700	.591	.625
1 1/8"	1.149	1.098	1.688	1.631	1.949	1.859	.780	.658	.625
1 1/4"	1.277	1.223	1.875	1.812	2.165	2.066	.876	.749	.625



Fasteners

Hex Head Bolts Galvanized

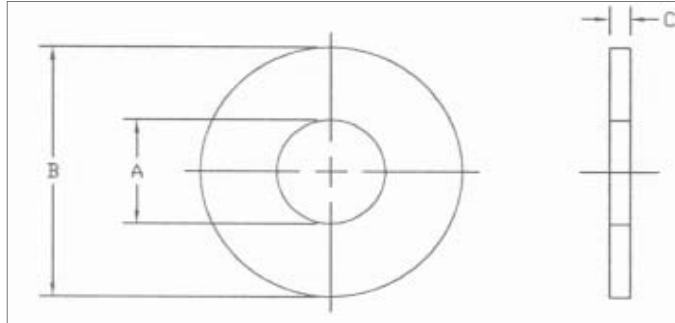


Diameter	E		F			G		H			Thread Length For Bolt Lengths	
	Full Size Body Diameter		Width Across Flats			Width Across Corners		Head Height			6" & Shorter	Over 6"
	Max.	Min.	Basic	Max.	Min.	Max.	Min.	Basic	Max.	Min.	Nom.	Nom.
1/4"	.260	.237	7/16	.438	.425	.505	.484	11/64	.188	.150	.750	1.000
5/16"	.324	.298	1/2	.500	.484	.577	.552	7/32	.235	.195	.875	1.125
3/8"	.388	.360	9/16	.563	.544	.650	.620	1/4	.268	.226	1.000	1.250
7/16"	.452	.421	5/8	.625	.603	.722	.687	19/64	.316	.272	1.125	1.375
1/2"	.515	.482	3/4	.750	.725	.866	.826	11/32	.364	.302	1.250	1.500
5/8"	.642	.605	15/16	.938	.906	1.083	1.033	27/64	.444	.378	1.500	1.750
3/4"	.768	.729	1 1/8	1.125	1.088	1.299	1.24	1/2	.524	.455	1.750	2.000
7/8"	.895	.852	1 5/16	1.313	1.269	1.516	1.447	37/64	.604	.531	2.00	2.250
1"	1.022	.976	1 1/2	1.500	1.450	1.732	1.653	43/64	.700	.591	2.250	2.500
1 1/8"	1.149	1.098	1 11/16	1.688	1.631	1.949	1.859	3/4	.780	.658	2.500	2.750
1 1/4"	1.277	1.223	1 7/8	1.875	1.812	2.165	2.066	27/32	.876	.749	2.750	3.000
1 3/8"	1.404	1.345	2 1/16	2.063	1.994	2.382	2.273	29/32	.940	.810	3.000	3.250
1 1/2"	1.531	1.470	2 1/4	2.250	2.175	2.598	2.48	1	1.036	.902	3.250	3.500
1 3/4"	1.785	1.716	2 5/8	2.625	2.538	3.031	2.893	1 5/32	1.196	1.054	3.750	4.000
2"	2.039	1.964	3	3.000	2.900	3.464	3.306	1 11/32	1.388	1.175	4.250	4.500



Fasteners

Flat Washers Galvanized



Washer Size	A			B			C		
	Inside Diameter			Outside Diameter			Thickness		
	Basic	Tolerance		Basic	Tolerance		Basic	Max.	Min.
		Plus	Minus		Plus	Minus			
3/16"	.250	.015	.005	.562	.015	.005	.049	.065	.36
1/4"	.312	.015	.005	.734	.015	.007	.065	.080	.051
5/16"	.375	.015	.005	.875	.030	.007	.083	.104	.064
3/8"	.438	.015	.005	1.000	.030	.007	.083	.104	.064
7/16"	.500	.015	.005	1.250	.030	.007	.083	.104	.064
1/2"	.562	.015	.005	1.375	.030	.007	.109	.132	.086
9/16"	.625	.015	.005	1.469	.030	.007	.109	.132	.086
5/8"	.688	.030	.007	1.750	.030	.007	.134	.160	.108
3/4"	.812	.030	.007	2.000	.030	.007	.148	.177	.122
7/8"	.938	.030	.007	2.250	.030	.007	.165	.192	.136
1"	1.062	.030	.007	2.500	.030	.007	.165	.192	.136
1 1/8"	1.250	.030	.007	2.750	.030	.007	.165	.192	.136
1 1/4"	1.375	.030	.007	3.000	.030	.007	.165	.192	.136
1 3/8"	1.500	.045	.010	3.250	.045	.010	.180	.213	.153
1 1/2"	1.625	.045	.010	3.500	.045	.010	.180	.213	.153
1 5/8"	1.750	.045	.010	3.750	.045	.010	.180	.213	.153
1 3/4"	1.875	.045	.010	4.000	.045	.010	.180	.213	.153
1 7/8"	2.000	.045	.010	4.250	.045	.010	.180	.213	.153
2"	2.125	.045	.010	4.500	.045	.010	.180	.213	.153



Fasteners

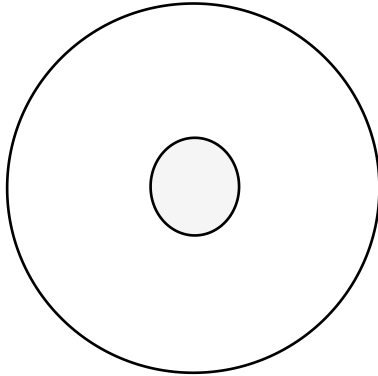
Nuts Galvanized



Nominal Size	F		G		H	
	Width Across Flats		Width Across Corners		Thickness	
	Max.	Min.	Max.	Min.	Max.	Min.
1/4"	.438	.428	.505	.488	.226	.212
5/16"	.500	.489	.577	.557	.273	.258
3/8"	.563	.551	.650	.628	.337	.320
7/16"	.688	.675	.794	.768	.385	.365
1/2"	.750	.736	.866	.840	.448	.427
9/16"	.875	.861	1.010	.982	.496	.473
5/8"	.938	.922	1.083	1.051	.559	.535
3/4"	1.125	1.088	1.299	1.240	.665	.617
7/8"	1.312	1.269	1.516	1.447	.776	.724
1"	1.500	1.450	1.732	1.653	.887	.831
1 1/8"	1.688	1.631	1.949	1.859	.999	.939
1 1/4"	1.875	1.812	2.165	2.066	1.094	1.030
1 3/8"	2.062	1.994	2.382	2.273	1.206	1.138
1 1/2"	2.250	2.175	2.598	2.480	1.317	1.245
1 5/8"	2.430	2.350	2.805	2.679	1.416	1.364
1 3/4"	2.625	2.538	3.031	2.893	1.540	1.460
1 7/8"	2.813	2.722	3.247	3.103	1.651	1.567
2"	3.000	2.900	3.464	3.306	1.763	1.675



Fasteners



1/2" Nylon Flat Washer

In freezing temperature metal and plastic rubbing against each other is not good. We suggest placing a nylon washer in between the float drum and galvanized flat washer. As shown in picture.



Pan Head Screws

Diameter: #12

Drive: Square or Phillips

Grade: 316

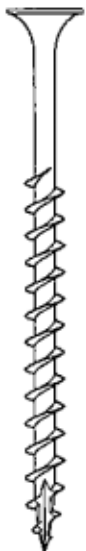
Head: Pan

Length: 1" & 1-1/4"

Material: Stainless Steel



Square Drive Deck Screws



.344" diameter #2 Square Drive Bugle Head

"Beaver Bite" type 17 auger point for extra fast starts

Coarse threads approximately 2/3 up shank draw board tightly to substrate

Pre-drilling always recommended, and a must near board ends to prevent splits

316 stainless steel "SWANEZE" strongly recommended for sea-side applications

Lengths offered 2 1/2", 3", & 5"



Fasteners

MAZE NAILS

Product # CS2091S

3 1/2" x .121"

20° Angle Head

Double Hot Dipped Zinc Coated

Sold by the Case 1,100 Pcs Per Case



Product# CS2061A

3 1/2" x .120"

20° Angle Head

Double Hot Dipped Zinc Coated

Sold by the Case 1,100 Pcs Count



Maze 20° nails work with these nail guns.

AIRY: ABL-B 290

BERRY FAST: 3000

BERRY FAST: 3500

BERRY FAST: 4100

BERRY FAST: 4500

BOSTITCH: N79RH

BOSTITCH: N88RH

BOSTITCH: N90RHN

BOSTITCH: N95RHN

BOSTITCH: KN85PP-1

CAMPBELL HAUSFELD:
NS2090

CRAFTSMAN: 18365

CRAFTSMAN: 18465

DEPOAN: 6C50/RN2290

DEWALT: D51844

DEWALT: D51845

DUO-FAST: CN350B-SH

DUO-FAST: CN350B

DUO-FAST: SNP 83

EASY FAST: SRN 90

EASY FAST: SRN 83

FASCO: F5C-RHN20-83

FASCO: F6C-RHN20-90

GREX: SF9021

HALSTEAD: HNS-24

HALSTEAD: HNS-32

HALSTEAD: HNS-39

HALSTEAD: NH-212

HALSTEAD: RN-90

HAOBOLD: RN 90 PII

HILTI: RHN 9020

HITACHI: NR-83A

HITACHI: NR-90AC

HOLZ-ER: 3546

HOLZ-ER: 3544

HOLZ-ER: 3540

HOLZ-ER: 3542

HOLZ-ER: 3547

INTERCHANGE: ICB-
FN88

ISM: ISM-921

JAMERCO: JTNFH-90

JAMERCO: JTNFHC-90

JOE POAN: DPN-6C50

JOE POAN: DPN-6C54

MAKITA: AN922

MAKITA: AN-8300

MAX: SN89RH

MAX: SN890RH

MAX: SN90

PASLODE: 5350 SRH

PORTER CABLE: FR350

PRIME AIR: PRH350

RIDG ID: R350RNA

SENCO: SN60

SENCO: SN65

SENCO: 600 FRH

SENCO: 602 FRH

SENCO: 702 FRH

SENCO: 752 FRH

SENCO: 700XL FRH

SENCO: 750XL FRH

SPOTNAIL: NPR 90

STAN-TECH: SDN11

STAN-TECH: SDN11B-1

UNICATCH: UNS 350 PL

ZNEX: FM-90

Galvanized Nails

Heavy Duty Galvanized Common

Smooth Shank, Flat Head Diamond Point

8, 16, 20, 40, 60, and 80 penny





Fasteners

New Product

UnStain™ 1500

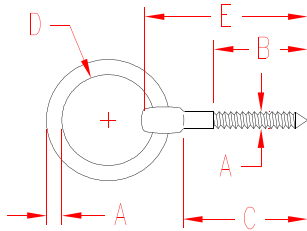
16D x 120 RHDG-s 3 1/2
3 1/2" x .120 Ring UnStain™1500
21° Plastic Coating





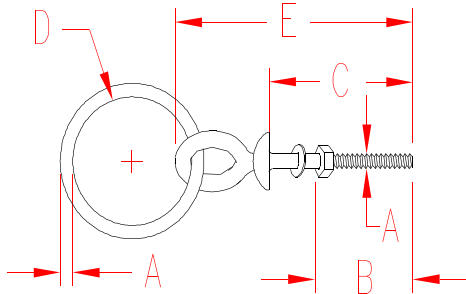
Fasteners

LAG RING BOLT 304 Stainless Steel



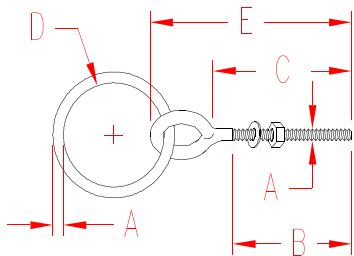
A (Size)	B	C	D	E	Weight (lbs)
1/4"	1.50"	2.25"	1.20"	2.75"	0.12
5/16"	1.50"	2.25"	2.00"	3.00"	0.22
3/8"	2.13"	3.13"	2.40"	3.86"	0.41
1/2"	3.25"	4.75"	2.94"	5.65"	0.76

RING BOLT SHOULDER 316 Stainless Steel



A (Size)	B	C	D	E	WLL (LBS.)	WT (LBS.)
1/4"	1.50"	2.00"	1.75"	2.94"	250	.14
5/16"	1.50"	2.25"	2.00"	3.50"	400	.27
3/8"	2.50"	4.25"	2.50"	6.00"	600	.54
3/8"	1.50"	2.50"	2.50"	4.00"	600	.48
1/2"	3.00"	6.00"	3.00"	7.75"	1,100	1.17
1/2"	1.50"	3.25"	3.00"	5.20"	1,100	1.06
5/8"	3.00"	6.00"	3.00"	8.50"	2,000	1.95
3/4"	3.00"	6.00"	3.00"	8.87"	2,600	2.89

RING BOLT PLAIN 316 STAINLESS STEEL



A (SIZE)	B	C	D	E	WLL (lbs.)	WT (lbs.)
1/4"	1.50"	2.00"	1.75"	2.94"	250	.12
5/16"	1.50"	2.25"	2.00"	3.50"	400	.21
3/8"	2.50"	4.25"	2.50"	5.75"	600	.38
3/8"	1.50"	2.50"	2.50"	4.25"	600	.42
1/2"	3.00	6.00"	3.00"	8.00"	1,100	.94
1/2"	1.50"	33.25"	3.00"	5.25"	1,100	.83

Suncor Stainless, Inc